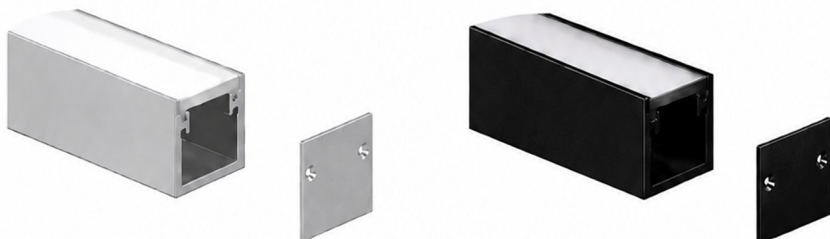


IP65 WALK OVER RECESSED PROFILE

2 METRE LENGTH



PRODUCT DESCRIPTION

The IP65 Walk Over Recessed Profile is a durable and stylish solution for creating professional recessed LED lighting installations.

Manufactured from high-quality 6063 aluminium, this profile is designed to be walk-over safe and suitable for both indoor and outdoor applications.

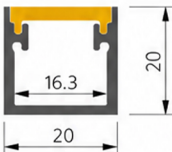
Supplied with a frosted diffuser for smooth, dot-free illumination and two end caps for a clean finish. Ideal for a wide range of architectural and landscape lighting projects.

KEY FEATURES

- IP65 Walk-Over Recessed Profile
- 2 metre length
- High-quality 6063 aluminium construction
- Dimensions: 20mm (W) x 20mm (D)
- Internal width: 16.3mm
- Frosted diffuser for smooth, even light output
- UV-resistant cover
- Includes 2 end caps
- Suitable for indoor and outdoor use
- Designed for use with IP67 Dotless Neon LED Strip
- Ideal for patios, driveways, gardens, walkways, and more

DRAWING

Unit: MM



End cap (x2)

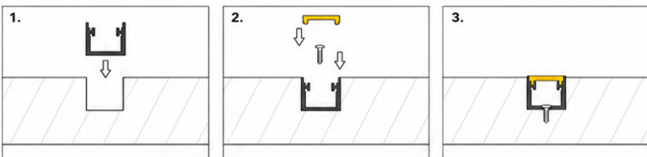
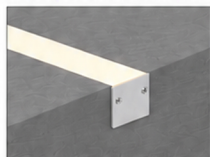
Frosted diffuser

Aluminium profile

SPECIFICATIONS

Product Type	Walk Over Recessed Profile
Material	6063 Aluminium
Finish	Silver / Black
Length	2 Metres
Dimensions (W x D)	20mm x 20mm
Internal Width	16.3mm
Diffuser	Frosted
IP Rating	IP65
Compatibility	Suitable for IP67 Dotless Neon LED Strip
Included	Frosted diffuser, 2 end caps

RECESSED INSTALLATION



For outdoor installations, an IP67-rated (or higher) LED strip must be used to maintain weather resistance.